

# Easy Weight

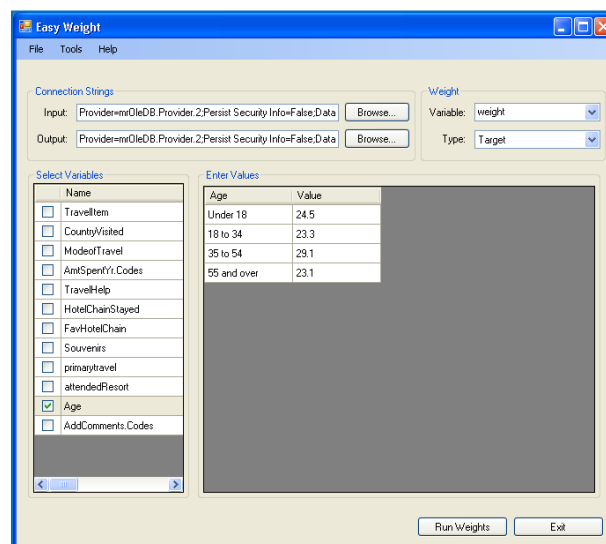
## *Create Weight Variables with Simple Menu Choices*

Analysis tools such as PASW Data Collection Reports for Surveys and Web Reports for Surveys make analyzing data easier than in the past. One of the tasks you may want to do to your data file when using these tools would be to create a weight variable, perhaps to proportion your data to match the population, or many other analysis reasons. You can do this through the data management scripting language, but what if you don't want to learn a scripting language? What if you could do this with just a few clicks of your mouse?

The Easy Weight application is a graphical user interface for weighting data using the PASW Data Collection Data Management Object Model. It will read your existing data file and give you options on what type of weighting you want and the variables to use for the weighting, plus other options to allow you to make the weight of your choice. Then it creates a new dataset including the newly created weight variable.

Easy Weight allows you to:

- Read any data file type supported by the PASW Data Collection Data Model
- Choose one or multiple variables to create your weight
- Use factor, target or rim weighting
- Choose options to create your specific weight, such as minimum and maximum trim options
- Create a final dataset in any PASW Data Collection Data Model supported file types

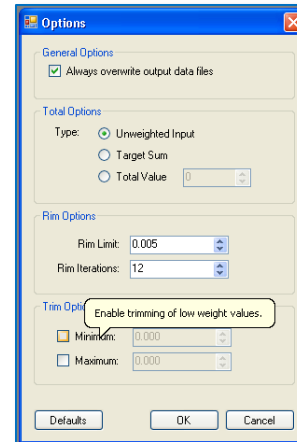


*Create weight variables with this easy to use interface.*

## Easy to Apply Options

There are several options available to allow you to achieve the weighting scheme you need.

Choose to have the total for the table based on unweighted counts, target sum or a total value of your choice. Additionally, choose from specific rim weighting options or trim options, all easily explained by popup descriptions.

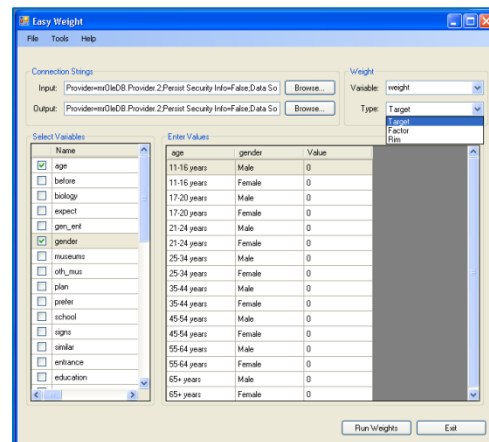


Many options available for weighting.

## No Scripting Required

With easy to navigate menu options, you can easily make a new data file with the weight variable you need. It automatically creates a new weight variable for you, or you can use an existing variable.

Easy Weight allows you to weight using one or more variables by simply checking the box next to the variable(s) from your data set. Then choose from target, factor, or rim weighting options. Input your values and run your weights. Your new data file is updated with the weight variable. Plus you receive a weight report of the results and a .dms file.



Weight with multiple variables.

## System requirements

- Reports for Surveys (Desktop Reporter)
  - Weight existing data (no variable creation or transformation)
- Professional (mrStudio)
  - Weight existing data
  - Create new weight variable
  - Transform to a new data file