

# WordCapture Cleaner

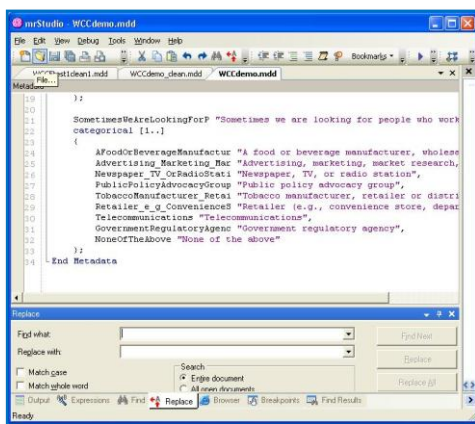
*Clean up your Metadata, quickly and efficiently.*

WordCapture is a wonderful SPSS tool for quickly getting information from a Microsoft Word document into a metadata file (.mdd). The only downside is that the metadata is often hard to use. That's where WordCapture Cleaner comes in. WordCapture Cleaner changes question names, category names, adds key words, even creates define lists, all with the simple click of a button.

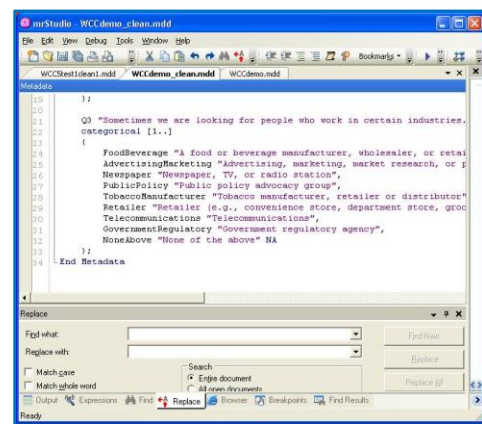
WordCapture Cleaner does by using Smart Names. WordCapture Cleaner will reassign the names of categorical responses. Then based on those make define lists, add keywords and even create an example routing.

WordCapture Cleaner gives users the ability to:

- Rename Questions
- Rename Categorical Responses in one of three ways
- Create define list automatically
- Find special responses and add the Key Words
- Create example routing, and remove the paper routing added by WordCapture
- Remove large spaces before questions and after responses
- Replace inserts with proper Dimension insert syntax
- Quickly view a summary of the metadata file



*Change the default WordCapture metadata...*



*Into a clean and efficient set of metadata.*

## Smart Names

WordCapture Cleaner has the ability to change categorical responses, cleaning up special characters WordCapture uses and making the names much shorter.

Smart Names has a few options. You can search the name given by WordCapture, or search the label for significant words. You can set the names from 1 to 5 words. Finally you can even edit which words are significant to WordCapture Cleaner in an easy to use options menu.

This saves you significant time and effort. Proper, efficient names will make your routing and data management a much easier.



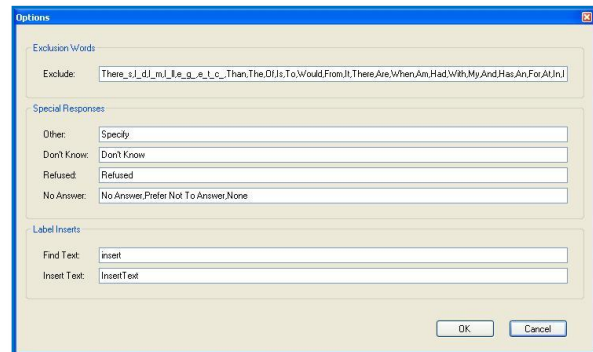
*Change question names, category names, add key words*

## Add Key Words, Build Define List

WordCapture Cleaner also has the capability to add Key Word to words and phrases which are completely customizable by you, the user. Simply set up the options, mark that you want key words, and click a button.

WordCapture Cleaner can also create define lists. This is extremely helpful whenever you have groups of responses that are the same. It allows you to just change the list once, and the whole survey is changed.

In the end, you have a metadata which is better prepared for scripting and data management.



*Define your own custom phrase for even more efficiency*

## System requirements

- Microsoft Windows XP, Microsoft Vista
- Microsoft .NET 2.0 Framework
- SPSS Dimensions Data Model